

West Coast Sailing Rig Shop

Laser / ILCA Vang Control PRO (Lines & Double Block) / Part # LASER190

Rigging Instructions - Rev. 3/1/2022

Kit Contents

1. 4mm Control Line spliced to Harken 18mm Double Block
2. 3mm Dyneema Primary Line spliced to Harken 18mm Double Block (with end loop)

*Note - Use of this upgrade requires an upper vang block with *removable* key ([WCS SKU 26113](#)) and an existing vang upgrade base ([WCS SKU 26042](#)). These are pretty standard so you likely have them!*

Rigging Instructions



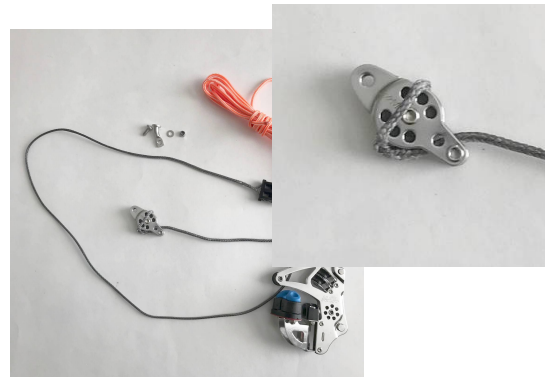
1 - Lay out your upgraded control line, vang base*, and vang upper block*. (*not included - use existing)



4 - Pass the loop through the becket on the upper block (top to bottom).



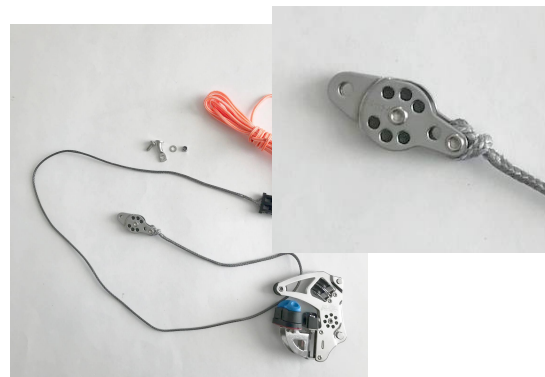
2 - Remove the vang key from the upper vang block. It may be a nut/bolt or a clevis pin/ring.



5 - Slide the loop *OVER* the block (from the end with the removed key)



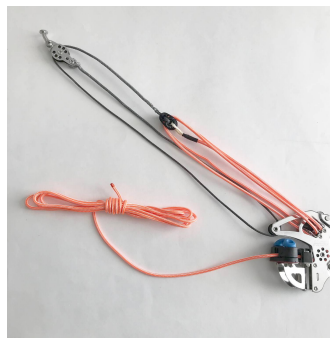
3 - Pass the dyneema primary line (with loop) through the single turning block on the vang base (bottom to top) and pull away from the vang base.



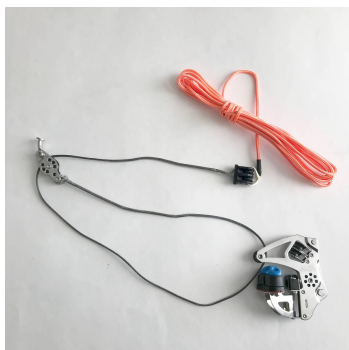
6 - Snug the loop down over the becket so that the dyneema line is now luggage tagged to the block.



7 - Slide the free end of the dyneema primary onto the sheave via the opening created by the removed key.



9 - Finish rigging the cascade with the control line, passing the line back and forth between the vang base and the double block, and then down through the lower turning sheave and cam cleat.



8 - Pull the line away from the block - the control line cascade should be *above* the dyneema primary line.

Questions? Contact our Rigging Team!

info@westcoastsailing.net

503-285-5536

Check out our full range of Laser/ILCA Upgrades

www.WestCoastSailing.net/ILCA